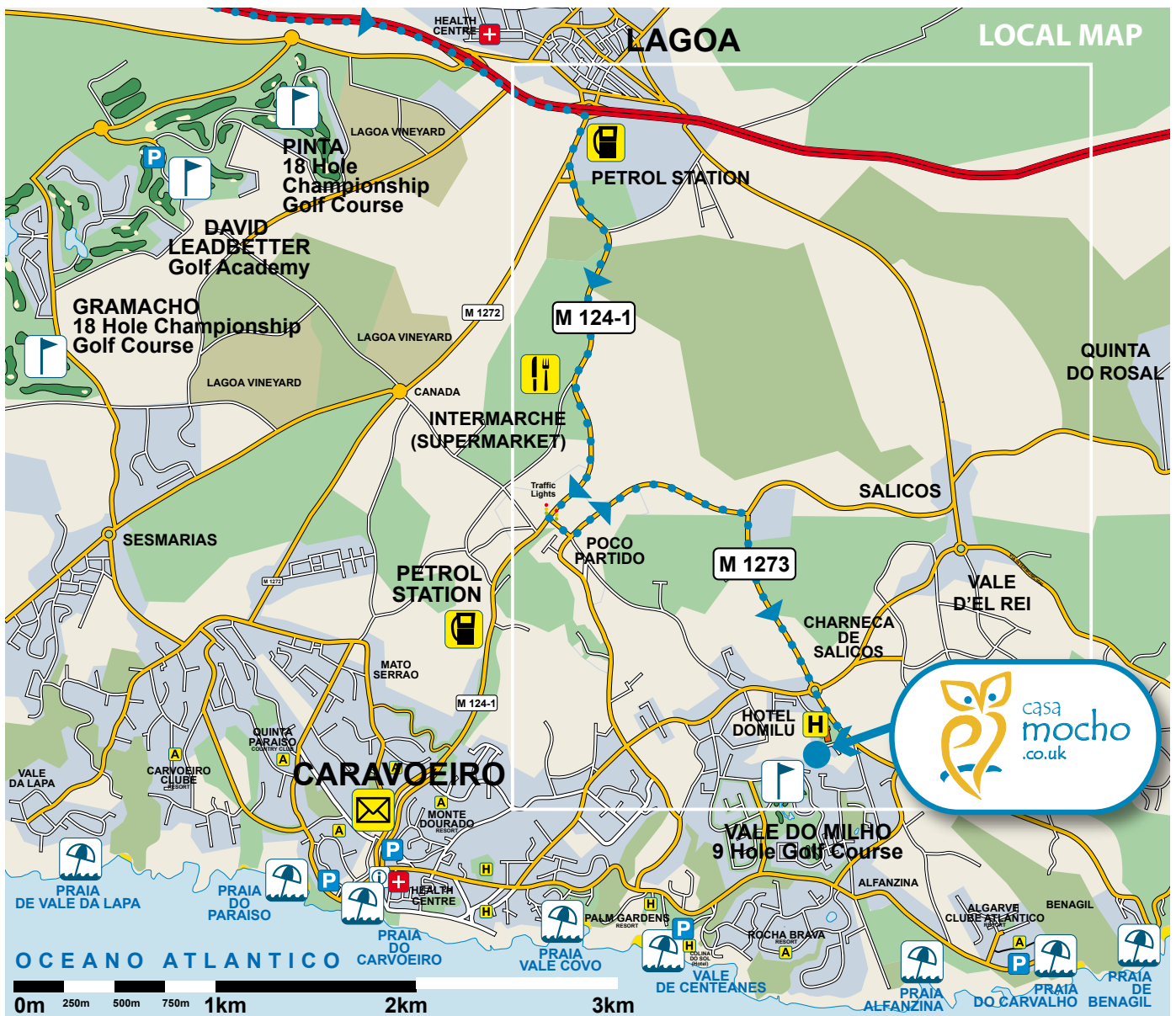


INFORMATION AND DIRECTIONS



Vale De Milho
8400-565
Praia do Carvoeiro
Portugal



Getting from the Airport to Carvoeiro and Casa Mocho

Approximately 45 minutes journey time

If you need petrol before you start the journey to Casa Mocho. Take the left slip road up to the roundabout, as you leave the Airport car park. There is a large petrol station here, the next petrol station is on the A22 about 30Km away. *Photo 1*

Leave Car Park following the road out of Faro picking up the blue A22 Portimao sign. *Photo 2*

0.03km

Turn right after the bridge following the signs to Lisboa, Portimao, Loule. *Photo 3*

Follow the bend round the road joining the dual carriageway under the flyover. *Photo 4*

Keep in the left hand lane following the blue A22 signs to Lisboa, Portimao, Loule,

Pass the Blue Elephant car wash on your right hand side

Pass the Galp petrol station on your right hand side

Continue along the dual carriageway passing the large Delta Cup and Saucer on your right hand side. *Photo 5*

2.05km

Follow the road sign for IC4 Loule, A22, continue straight on. *Photo 6*

2.09km

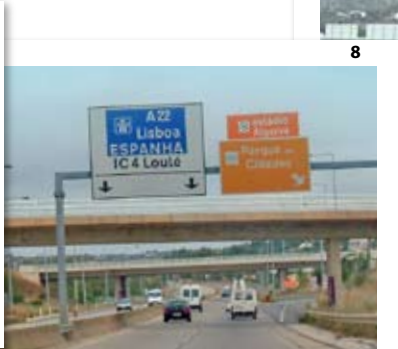
Pass the sign for Lisboa-Albufeira - note the orange signs for the Estadio Algarve. *Photo 7*

Follow the signs - A22 Lisboa, ESPANHA. *Photo 8*

Do not take the first right turn - A22 - ESPANHA

Turn right at the second junction, following the sign for A22 Lisboa-Albufeira-Portimao. *Photo 9*

Look out for cars from your left as you join the A22





10



11

Getting from the Airport to Carvoeiro and Casa Mocho



12

10.08 km Continue on the A22 following the signs to Lagos – Portimão. You will exit the A22 at turn off 6, about 50Km from here.

Before you reach turn off 6 you will pass signs for:

- Tunnel Areiro
- Rib Cadoucao
- Rib Espiche
- Rib Alcantarilha
- Vale Das Fontes
- Tunnel do Sobral
- Vale do Sobral
- Vale das Lameiras
- Tunnel des Porches



13

56.3km Pass sign Lagoa-Junction 6 (Silves) – you are coming off at this junction. *Photo 10*



14

57.9km At the roundabout at the top of the slip road, follow the sign for Carvoeiro. *Photo 11*

58.2km Pass a sign Lagoa 3 km
At the next roundabout carry straight on, following the signs for Carvoeiro. *Photo 12*

Pass under the flyover following the signs for Carvoeiro. *Photo 13*
You will see "Slide And Splash in the distance as the road curves to join the dual carriageway. *Photo 14*

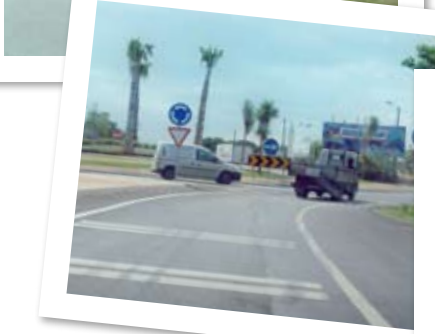
You are now joining the dual carriageway, this will then go to a single lane. Follow the signs for Carvoeiro. *Photo 15*



15

59.2km Carry on over the new roundabout. *Photo 16*
Carry on up to a set of lights following the right turn signs to Carvoeiro. *Photo 17*

At the lights turn right following the signs into Carvoeiro town



16

62.7km After approx 200 M you will approach a new roundabout. Take the second exit following the signs to the town centre. *Photo 18*



17



18



19

Getting from the Airport to Carvoeiro and Casa Mocho

Directions to the Villa

After approx 2KM you will pass Intermarche hypermarket on your right. *Photo 19*

About 200 M past Intermarche you will approach a set of traffic lights where you will turn left. *Photo 20*

After turning left, continue on the road as it turns left following signs for Rocha Brava and Vale do Milho Golf. *Photo 21*

Continue on this road for approx 2KM

You will approach a roundabout; go straight across following signs to Benagil. *Photo 22*

After approx 300 meters, you will see signs to the hotel – “Casa Domilu” next to two palm trees. *Photo 23*

Turn right here
Follow the road down to the bottom, where you will see the white entrance gates to Casa Mocho. *Photo 24*



20



21



22

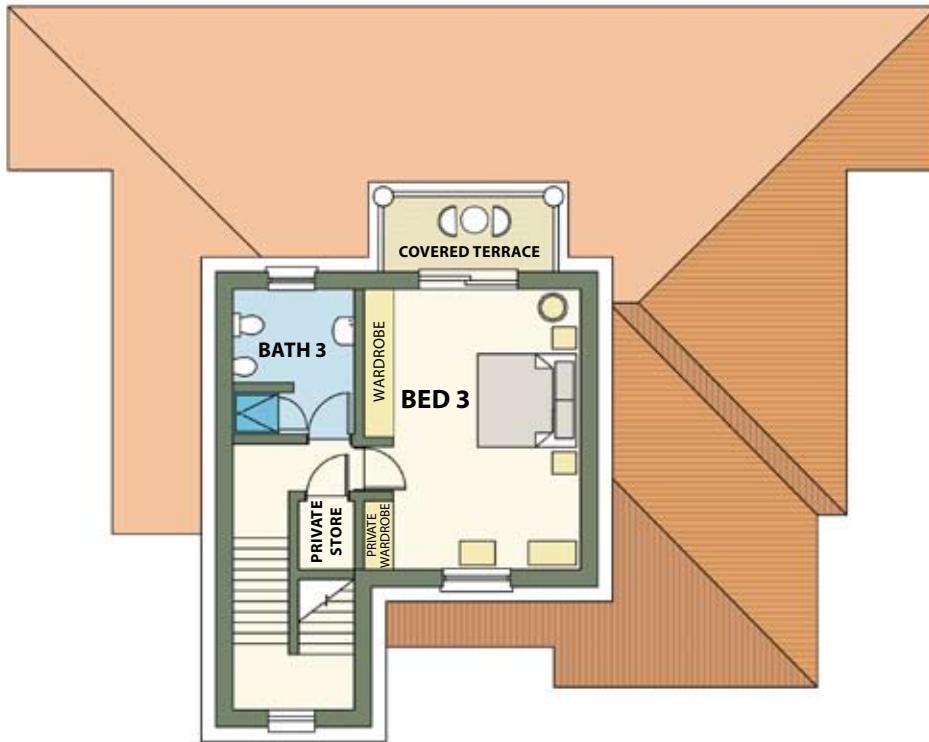


23

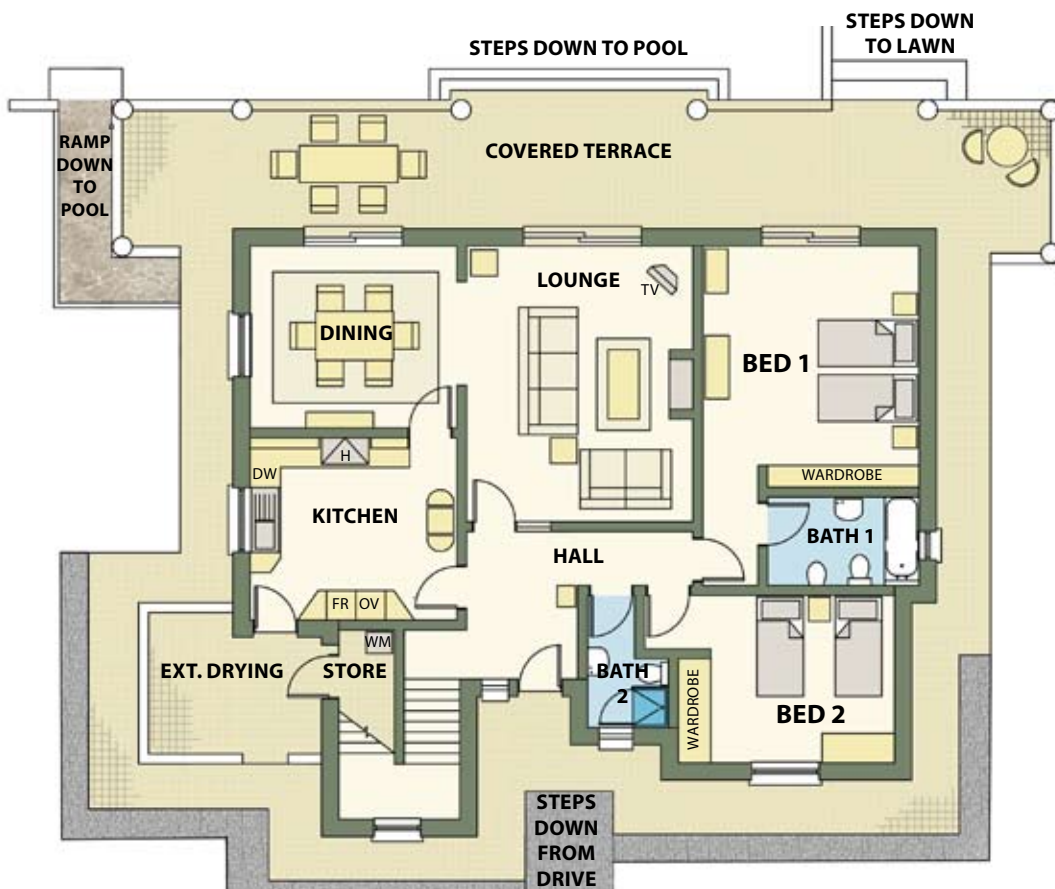


24





FIRST FLOOR PLAN



GROUND FLOOR PLAN

